



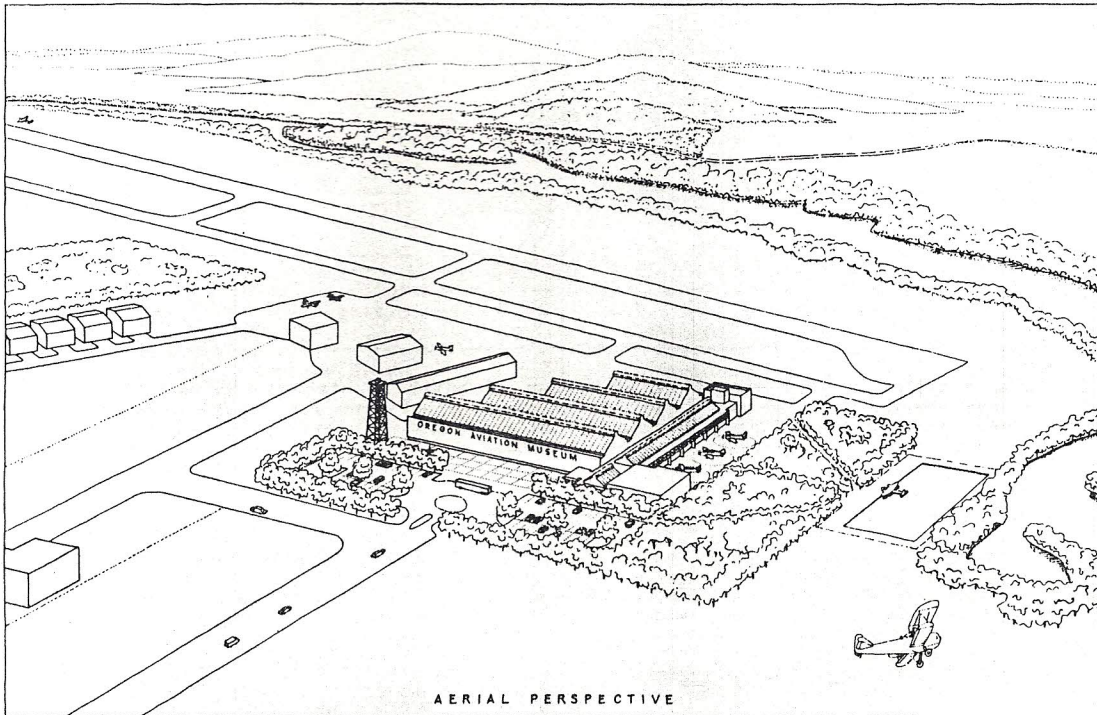
ANNUAL MEETING ISSUE

OAM Newsletter

VOL II, NO. I

P.O. BOX 11684 EUGENE, OR 97440

FEBRUARY 1989

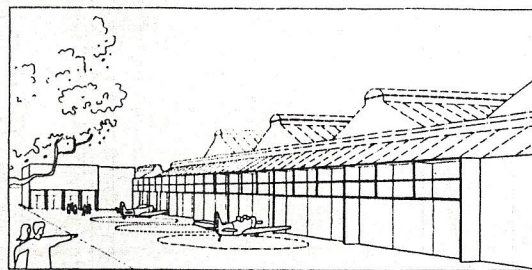


AERIAL PERSPECTIVE

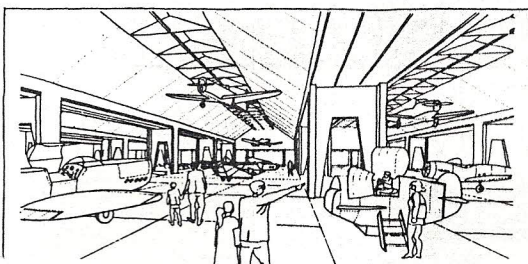
PLANNED FUTURE HOME OF OREGON AVIATION MUSEUM WOWS ANNUAL MEETING CROWD

Gary Moyer's museum design places four distinct building elements on the site to maximize exhibit area both inside and outside the building, and to provide access from both land and air.

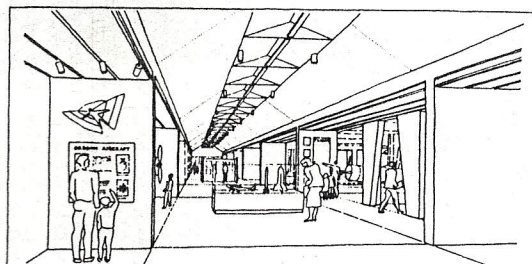
Hangar elements of different lengths join a circulation gallery which connects an observation area near the south end of the Cottage Grove airport with a museum support building, providing space for administration, library, auditorium, gift shop and restrooms.



VIEW OF EXHIBIT COURT



VIEW OF HANGAR GALLERY



VIEW OF CIRCULATION GALLERY

Each hangar gallery is designed to accommodate modular exhibit space, and full size aircraft at eye level or hanging from a specially lighted vaulted ceiling.

